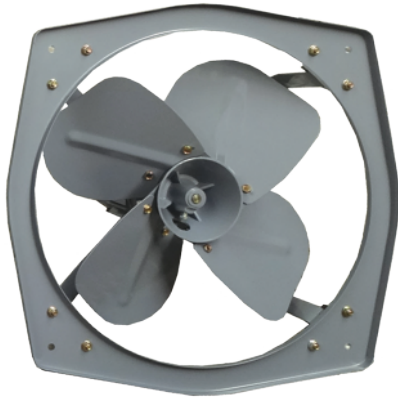


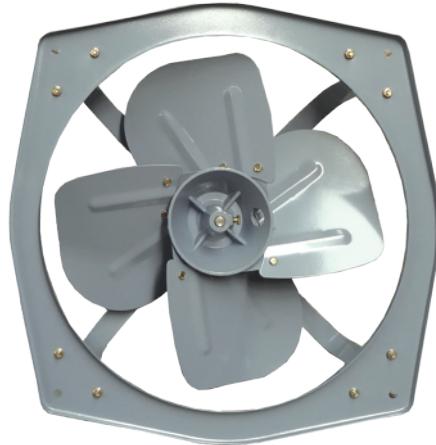
## EXHAUST FAN (Heavy Duty)



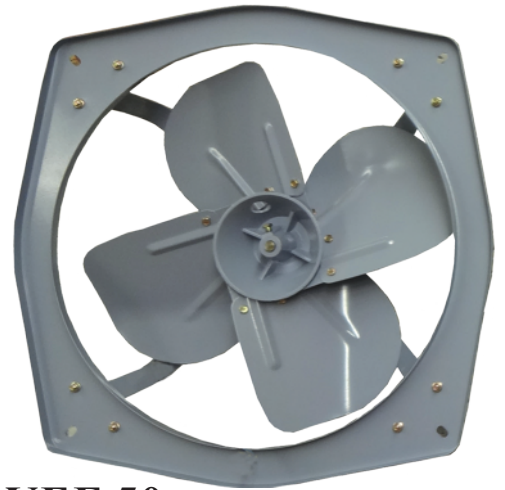
Exhaust Fan Heavy Duty Series is suitable for use in places of different environments such as factory, school, hotel, etc and is an excellent product for venti-lation, air changing, detoxicating. It is firm overall appearance, safe and reliable operation.



**VEF 40**



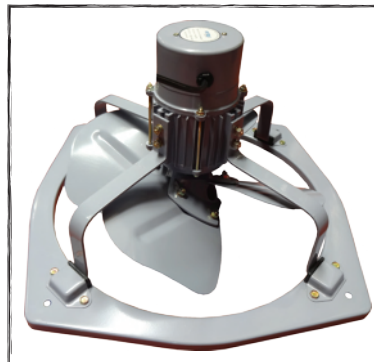
**VEF 45**



**VEF 50**

**Stock Code :**

- EXHAUST FAN 16" - VEF 40 - 880322008A
- EXHAUST FAN 18" - VEF 45 - 880322009A
- EXHAUST FAN 20" - VEF 50 - 880322010A



MODEL	VEF-40	VEF-45	VEF-50
SIZE	16"	18"	20"
PHASE	1PH		
VOLTAGE	220~240V / 50HZ		
WATTS	215W	280W	310W
SPEED	1400 r/min		
AIR FLOW	48 m <sup>3</sup> /min	82 m <sup>3</sup> /min	93 m <sup>3</sup> /min
NET WEIGHT	8kgs	12kgs	19kgs
GROSS WEIGHT	8.5kgs	12.5kgs	19.5kgs
DIMENSION	500 X 500 X 285 mm	570 X 570 X 320 mm	610 X 610 X 320 mm

\*\*\* Product's specification may subject to change without futher notice.  
 \*\*\* Actual product may slightly differ from pictures shown.